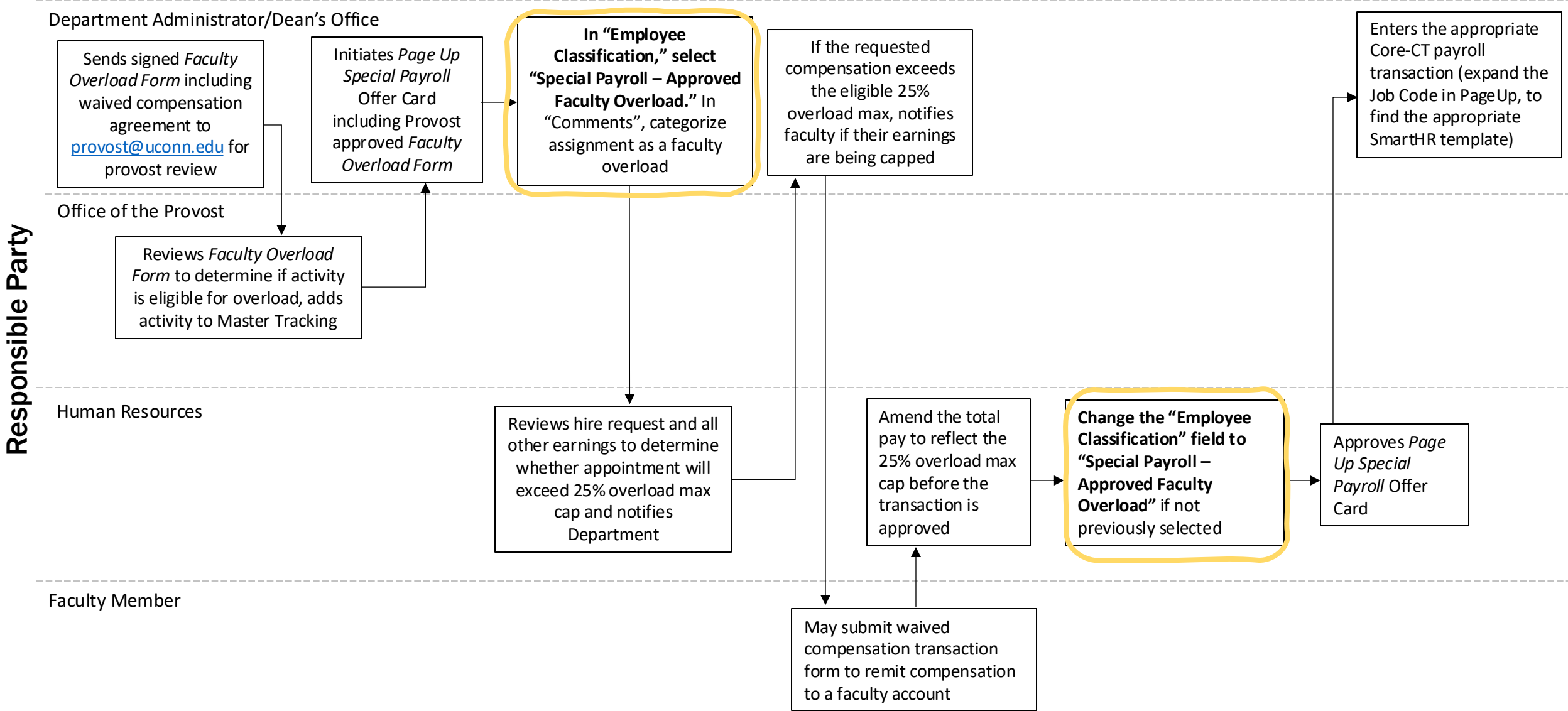


Faculty Overload: Procedures (excluding CETL coordinated May/Winter/Summer Teaching)

All overload must be approved by the Dept Head, Dean and Provost PRIOR to the start of the activity



Faculty Overload: Procedures (May/Winter/Summer Teaching – CETL ONLY)

All overload must be approved by the Dept Head, Dean and Provost PRIOR to the start of the activity

